



# Slotted Display Systems



Wall Stripping - 40mm



- Slotted wall stripping - 40mm pitch - represents the most economical method of displaying merchandise
- Equally at home in front-of-house retail or back-of-house storage or in any situation around the home or office where functional storage is required
- With the ADP range of integrated accessories, you get to select from a wide range of accessories to meet your specific and varying needs



Slotted Wall Stripping - Single

- 19mm wide x 13mm deep

Part No.	Height	Finish
AP5350/4C	1200	Chrome
AP5350/6C	1800	Chrome
AP5350/8C	2400	Chrome
AP5350/4W	1200	White
AP5350/6W	1800	White
AP5350/8W	2400	White



Slotted Wall Stripping - Double

- 32mm wide x 13mm deep

Part No.	Height	Finish
AP5355/4C	1200	Chrome
AP5355/6C	1800	Chrome
AP5355/8C	2400	Chrome
AP5355/4W	1200	White
AP5355/6W	1800	White
AP5355/8W	2400	White



Slotted Tubing - 40mm Pitch

- 30 × 30mm steel tube with 13mm wide slots.
- Stocked in Chrome finish or in raw steel for fabrication or may be powdercoated to any colour specified

Part No.	Height	Finish	CTN Qty.
Slot 1 Face			
AP6547CH	2400	Chrome	6
AP6551CH	3000	Chrome	6
AP6551RAW	3000	Raw	6
AP6551/PC	3000	Powdercoat to specification	6
Slot 2 Face			
AP6552CH	3000	Chrome	6
AP6552RAW	3000	Raw	6
AP6552PC	3000	Powdercoat to specification	6



Levelling Foot

- For use with slotted tubing when using wall-mounted brackets
- Transfers much of the weight of the post to the floor

Part No.	Finish	CTN Qty.
AP40000	Zinc	200

Tubing - 40mm



Wall - Mounting Spacer

- Heavy-duty 2 piece chrome bracket eliminates the need for the aluminium wall channel
- Mount the round flange onto the wall and screw the plate onto back of slotted tubing
- Fasten together by tightening grub screws

Part No.	Finish	CTN Qty.
AP9230C	Chrome	100
AP9230B	Black	100



Floor - Ceiling Fixing Kit

- Allows for mounting of posts in central displays, display windows, etc
- Includes upper flange with sliding insert fitting and bottom levelling flange for floor fixing

Part No.	Finish
AP9232B	Black
AP9232W	White

'H' Racks - 40mm



Mobile 'H' Shape Gondola - 40mm Pitch

- Superb in its simplicity, this slotted frame unit can be fully merchandised around all 4 sides
- Centre frame with middle upright allowing for universal merchandising using 600mm accessories
- Shown with optional castors

Part No.	Overall Dimensions (LxWxH)	Finish
AP6555C	1290 × 630 × 1300	Chrome



Rubber Wheels for Gondola

- Heavy duty 75mm rubber swivel casters
- 3/8 Thread

Part No.	Finish
AP5047PL	Plain
AP5047BR	Braking



Mobile 'H' Shape Gondola - 40mm Pitch

- Now the basic 'H' Rack frame can be simply converted into a fully functional free-standing unit that will match your store interior
- Individual end panels are purchased separately so that you can install them in all 4 zones, just in the centre, or on the ends. (The item pictured has 4 x infil panels)
- Individual panels are provided in 18mm thick pre-finished board and are simply screwed into pre-drilled holes in the rack using the screws provided
- Available in the ADP standard colour range or any other board colour, as specified
- Shown with optional infil panels x4 off

Part No.	Overall Dimensions (WxHxD)	Finish
AP6557COL	548 × 1253 × 18	As specified

Concealed Stripping - 40mm



Single - Slot Centre

- Designed for ease of installation – no rebating of panels required. Includes fixing channels for countersunk screws
- Provides panel spacing from wall to allow for aluminium split battens (see page 7)
- 40mm Pitch

Part No.	Length	Finish
AP6500/40	2400	Mill Finish



Single - Slot End

- 40mm Pitch

Part No.	Length	Finish
AP6501/40	2400	Mill Finish



Double - Slot Centre

- Allows for side by side placement of brackets
- 40mm Pitch

Part No.	Length	Finish
AP6502/40	2400	Mill Finish



Concealed Aluminium Wall Stripping

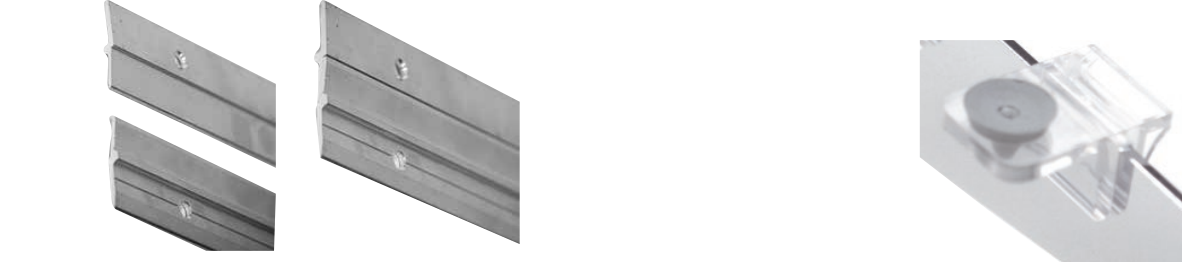
- The ALIAS system provides some exciting opportunities for free-standing or wall-mounted merchandising. Based on a system of concealed, slotted aluminium wall strips, we can provide you with a complete system with infill panels in plain melamine finish or PLANKWALL panels for additional merchandising flexibility
- Aluminium strips can be rebated



Concealed Stripping - 40mm



Shelf Brackets - 40mm



Aluminium Split Batten

- This heavy-duty split rail is a very solid extrusion that allows for installation of full-size panels
- Pre-drilled holes at 300mm centres for easy attachment to wall or back of panel
- Designed to complement the concealed stripping profiles, this section perfectly matched the thickness of the fixing channel

Part No.	Length	Finish
AP6503/5M	2500	Mill Finish



Straight Shelf Brackets - 2-Lug

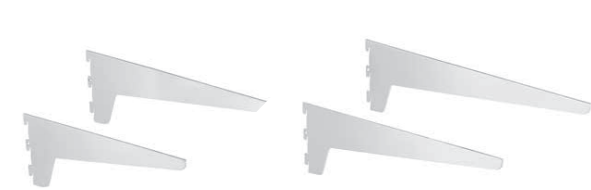
- 40mm Pitch

Part No.	Length	Finish
AP5359C	200	Chrome
AP5359W	200	White
AP5360C	250	Chrome
AP5360W	250	White
AP5361C	300	Chrome
AP5361W	300	White

Shelf bracket Clip & Grommet

- Clear plastic clip for attaching shelf with grey rubber grommet inserted
- May be used with glass or melamine shelf

Part No.	Finish	CTN Qty
AP808	Clear	1000



Straight Shelf Brackets - 3-Lug

- 40mm Pitch

Part No.	Length	Finish
AP5362C	350	Chrome
AP5362W	350	White
AP5363C	400	Chrome
AP5363W	400	White
AP5364C	450	Chrome
AP5364W	450	White
AP5365C	500	Chrome
AP5365W	500	White

Shelf Brackets - 40mm



Adjustable Shelf Bracket

- Adjustable from 15 Deg up, 15 Deg, 30 Deg, 45 Deg down
- 40mm Pitch

Part No.	Length	Finish	CTN Qty
AP5370	250	Chrome	50
AP5371	300	Chrome	50
AP5372	350	Chrome	50



Glass Shelf Bracket

- Beautiful slimline bracket fastens onto glass shelf with grab screws underneath for a secure fixing
- Suits 6-8mm glass shelves

Part No.	Finish	CTN Qty
AP6232	Chrome	50



Front End Stop

- 50mm long overall to retain sloping shelves

Part No.	Finish	CTN Qty
AP817	Chrome	200



Screw-on 'L' Shaped Shelf Brackets

- Screws onto the sides of an 18 – 25mm thick shelf
- Countersunk screws provided
- 40mm Pitch
- Sold in pairs

Part No.	Length	Finish	CTN Qty
AP6561	300	Chrome	25 Pairs
AP6563	400	Chrome	25 Pairs

Shelf Brackets - 40mm



'L' Shaped Shelf Brackets with Lip

- Use with suction cups (below) for glass shelves or screw underneath for timber shelves
- 40mm Pitch
- Sold in pairs

Part No.	Length	Finish	CTN Qty
AP6581	300	Chrome	25 Pairs
AP6583	400	Chrome	25 Pairs



Screw-on Adjustable Angle Shelf Bracket

- 40mm Pitch
- Sold in pairs

Part No.	Length	Finish	CTN Qty
AP6581	300	Chrome	25 Pairs
AP6583	400	Chrome	25 Pairs



Suction Cup

- Transparent suction cup used with lipped brackets
- Prevents glass shelves from sliding

Part No.	Finish	CTN Qty
AP5767	Clear	1000



Central Shelf Bracket

- For use with slotted tubing in window display etc
- 40mm Pitch

Part No.	Length	Finish	CTN Qty
AP6568	300	Chrome	25 Pairs



Shelving



Glass Shelves

- 6mm thick toughened shelves with polished edges and front 2 corners with 10mm radius

Part No.	Size (W x D)	Thickness
AP4170	600 × 250	6
AP4171	600 × 300	6
AP4172	600 × 350	6
AP4175	900 × 250	6
AP4176	900 × 300	6
AP4177	900 × 350	6
AP4180	1200 × 250	6
AP4181	1200 × 300	6
AP4182	1200 × 350	6
AP40351	590 × 300	6
AP40353	655 × 300	6
AP40354	655 × 400	6
AP400.750	750 × 400	6

Melamine Shelves

- 18mm MDF
- Available in White (WHI) or Black (BLA)
- Shelves are edged with 2mm PVC edging for superior durability

Part No.	Size (W x D)	Thickness
AP4141	600 × 300	18
AP4142	600 × 400	18
AP4146	900 × 300	18
AP4147	900 × 400	18
AP4151	1200 × 300	18
AP4152	1200 × 400	18

Hangrails and Crossbars



Hangrail Tubing

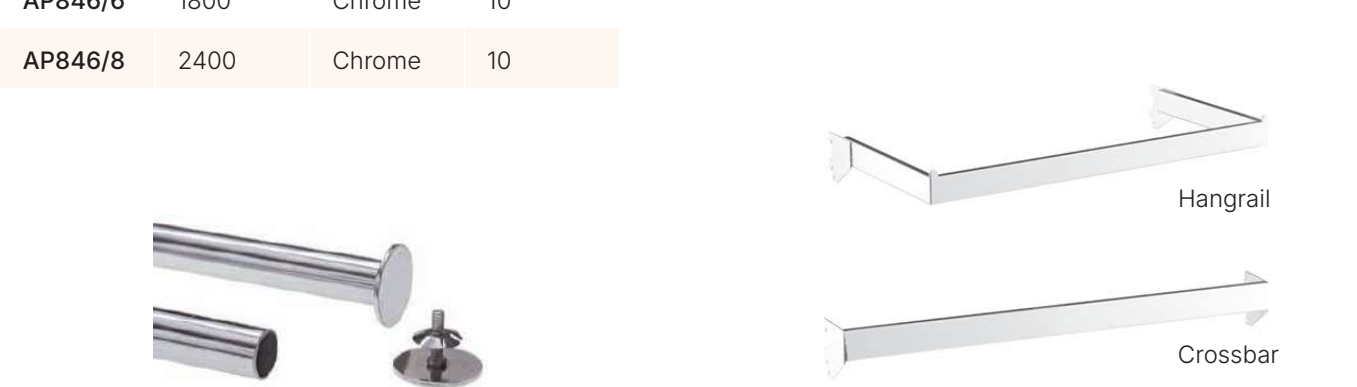
- 25mm Diametre round tubing
- 1.6mm wall thickness

Part No.	Length	Finish	CTN Qty
AP846/4	1200	Chrome	10
AP846/6	1800	Chrome	10
AP846/8	2400	Chrome	10

Hangrail Bracket

- For 25mm Diametre Tubing
- 40mm Pitch
- Tubing sold separately

Part No.	Length	Finish	CTN Qty
AP5317	350	Chrome	50



Tube End Cap

- Push in flanged end cap
- 48mm Diametre
- Pushes into 25mm tube

Part No.	Finish	CTN Qty
AP849	Clear	200

Rectangular Tubing

- 38 × 12mm rectangular tubing
- 40mm Pitch

Part No.	Length	Finish	CTN Qty
Hangrail			
AP6525	600	Chrome	10
AP6526	900	Chrome	10
AP6521	1200	Chrome	10
Crossbar			
AP6527	600	Chrome	10
AP6528	900	Chrome	10
AP6522	1200	Chrome	10

Crossbar Accessories



Lingerie Crossbar Faceout

- To suit 38 × 12mm rectangular tubing.
- 12mm Diametre tube with 25mm front disc

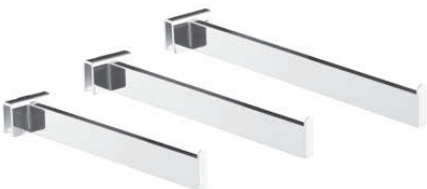
Part No.	Length	Finish	CTN Qty
AP5124	300	Chrome	24



Waterfall Crossbar Faceout

- To suit 38 × 12mm rectangular tubing
- 7 Ball stops

Part No.	Length	Finish	CTN Qty
AP5121	400	Chrome	24



Straight Crossbar Faceout

- To suit 38 × 12mm rectangular tubing

Part No.	Length	Finish	CTN Qty
AP5120/12	300	Chrome	24
AP5120/14	350	Chrome	24
AP5120/16	400	Chrome	24



Stepped Crossbar Faceout

- To suit 38 × 12mm rectangular tubing

Part No.	Length	Finish	CTN Qty
AP5123	400	Chrome	24



Crossbar Wine Bottle Displayer

- To suit 38 × 12mm rectangular tubing

Part No.	Length	Finish	CTN Qty
AP5131C	300	Chrome	100
AP5131B	300	Chrome	100



Crossbar Display Prongs

- To suit 38 × 12mm rectangular tubing

Part No.	Length	Finish	CTN Qty
AP5125	150	Chrome	100
AP5126	250	Chrome	100



Crossbar Multi Ball Holder

- To suit 38 × 12mm rectangular tubing

Part No.	Length	Finish	CTN Qty
AP5122C	500	Chrome	24



Crossbar 5-Hook Waterfall Faceout

- To suit 38 × 12mm rectangular tubing
- 'J' hooks

Part No.	Length	Finish	CTN Qty
AP5125	150	Chrome	100
AP5126	250	Chrome	100

Crossbar Accessories

Tubing - 60mm



Slotted Tubing - 60mm Pitch

- 30 × 30mm steel tube with 13mm wide slots.
- Stocked in Chrome finish or in raw steel for fabrication or may be powdercoated to any colour specified

Part No.	Height	Finish	CTN Qty.
Slot 1 Face			
AP6951/60C	3000	Chrome	6
AP6951/60BK	3000	Black	6
AP6951/60RAW	3000	Raw	6
AP6951/60PC	3000	Powdercoat to specification	6
Slot 2 Face			
AP6952/60C	3000	Chrome	6
AP6952/60RAW	3000	Raw	6
AP6952/60PC	3000	Powdercoat to specification	6



Levelling Foot

- For use with slotted tubing when using wall-mounted brackets
- Transfers much of the weight of the post to the floor

Part No.	Finish	CTN Qty.
AP40000	Zinc	200



Wall - Mounting Spacer

- Heavy-duty 2 piece chrome bracket eliminates the need for the aluminium wall channel
- Mount the round flange onto the wall and screw the plate onto back of slotted tubing
- Fasten together by tightening grub screws

Part No.	Finish	CTN Qty.
AP9230C	Chrome	100
AP9230B	Black	100



Floor - Ceiling Fixing Kit

- Allows for mounting of posts in central displays, display windows, etc
- Includes upper flange with sliding insert fitting and bottom levelling flange for floor fixing

Part No.	Finish
AP9232B	Black
AP9232W	White

Accessories - 60mm



Rectangular Tubing Hangrail

- 38 × 12mm rectangular tubing
- 60mm Pitch

Part No.	Length	Finish	CTN Qty
AP6925	600	Chrome	10
AP6926	900	Chrome	10
AP6921	1200	Chrome	10



Screw-On 'L' Shaped Shelf Brackets

- 60mm Pitch
- Screw onto sides of an 18-25mm thick shelf
- Sold in pairs

Part No.	Length	Finish	CTN Qty
AP6961	300	Chrome	25 Pairs
AP6963	400	Chrome	25 Pairs



Rectangular Tubing Cross Bar

- 38 × 12mm rectangular tubing
- 60mm Pitch

Part No.	Length	Finish	CTN Qty
AP6927	600	Chrome	10
AP6928	900	Chrome	10
AP6922	1200	Chrome	10



'L' Shaped Shelf Brackets With Lip

- Screws onto the sides of an 18 – 25mm thick shelf. Countersunk screws provided
- 60mm Pitch
- Sold in pairs

Part No.	Length	Finish	CTN Qty
AP6981	300	Chrome	25 Pairs
AP6983	400	Chrome	25 Pairs



'H' Racks - 60mm



Mobile 'H' Shape Gondola - 60mm Pitch

- Superb in its simplicity, this slotted frame unit can be fully merchandised around all 4 sides
- Centre frame with middle upright allowing for universal merchandising using 600mm accessories
- Shown with optional castors

Part No.	Overall Dimensions (LxWxH)	Finish
AP6955C	1290 × 630 × 1300	Chrome
AP6955B	1290 × 630 × 1300	Black



Rubber Wheels for Gondola

- Heavy duty 75mm rubber swivel casters
- 3/8 Thread

Part No.	Finish
AP5047PL	Plain
AP5047BR	Braking

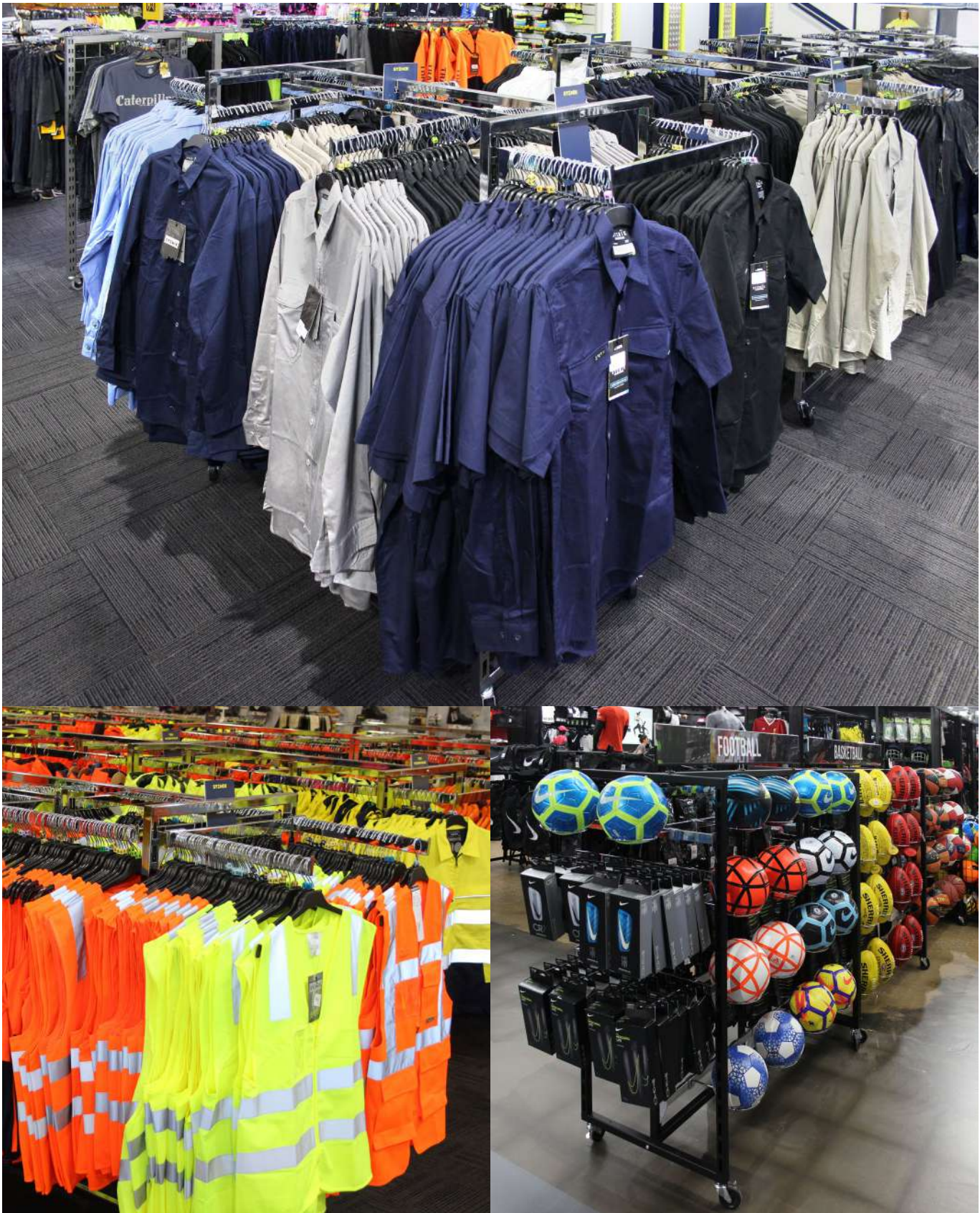


Mobile 'H' Shape Gondola - 40mm Pitch

- Now the basic 'H' Rack frame can be simply converted into a fully functional free-standing unit that will match your store interior
- Individual end panels are purchased separatley so that you can install them in all 4 zones, just in the centre, or on the ends. (The item pictured has 4 x infil panels
- Individual panels are provided in 18mm thick pre-finished board and are simply screwed into pre-drilled holes in the rack using the screws provided
- Available in the ADP standard colour range or any other board colour, as specified
- Shown with optional infil panels x4 off

Part No.	Overall Dimensions (WxHxD)	Finish
AP6557COL	548 × 1253 × 18	As specified

'H' Rack Examples



## Contact Us

# 1800 642 366

[www.adpstore.com.au](http://www.adpstore.com.au)

[sales@adpstore.com.au](mailto:sales@adpstore.com.au)

### Sydney

Level 6, 10 Herb Elliot Ave  
Sydney Olympic Park, NSW 2127

☎ 1800 642 366

### Perth

33 Tamara Drive  
Cockburn Central, WA 6164

☎ 1800 642 366

### Adelaide

255 Richmond Road  
Richmond, SA 5033

☎ 08 7079 2025

### Brisbane

Level 4, 97 Boundary Street  
West End, QLD 410

☎ 1800 642 366

### Melbourne

Unit 4, 2 Thomsons Road  
Keilor Park, VIC 3042

☎ 1800 642 366

### Auckland

40 Onehunga Mall  
Onehunga, Auckland 1061

☎ +64 9 950 8720